

# INCEPTION

FROM "INCEPTION"  
IMP 12202

(C MINOR BLUES)

MC COY TYNER

TRASCritto DA R. SOGGETTI

Chords:  $D\flat 7^{ALT}$   $B\flat 7^{ALT}$   $G 7^{ALT}$   $E 7^{ALT}$   $D\flat 7^{ALT}$

Chords:  $G 7$   $C 7^{ALT}$   $F 7$   $B 7$   $E 7^{ALT}$   $D\flat 7^{ALT}$   $C - 6$

Chords:  $G 7$   $C 7^{ALT}$   $F 7$   $B 7$   $E 7^{ALT}$   $D\flat 7^{ALT}$   $C - 6$

Chords:  $F 7^{ALT}$   $E 7^{ALT}$   $E\flat 7^{ALT}$   $D 7^{ALT}$   $D\flat 7$   $C 7^{ALT}$   $F - 7$

Chords:  $G 7$   $C 7^{ALT}$   $F 7$   $B 7$   $E 7^{ALT}$   $D\flat 7^{ALT}$   $C - 6$

B $\flat$ /A $\flat$  A $\flat$  E $\flat$ /A $\flat$  D $\flat$  C-7 C-7/B $\flat$  G7

The piano introduction consists of two staves. The right hand plays chords and a melodic line, while the left hand plays a simple bass line. The key signature is B-flat major (two flats). The chords are B $\flat$ /A $\flat$ , A $\flat$ , E $\flat$ /A $\flat$ , D $\flat$ , C-7, C-7/B $\flat$ , and G7. The piece ends with a double bar line.

CHORUS 1

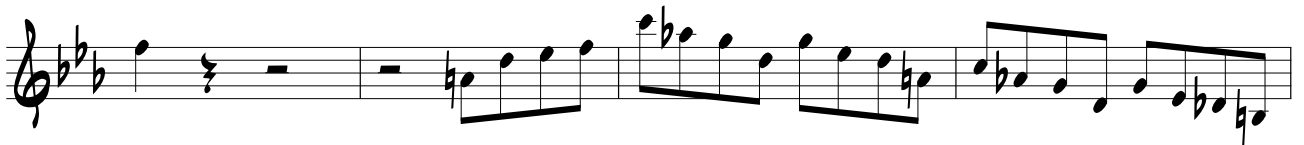
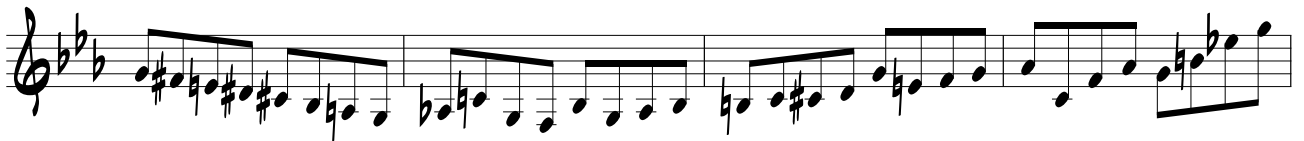
The vocal melody for Chorus 1 is written on a single staff. It begins with a C-7 chord. The melody consists of several phrases, each starting with a quarter rest. The chords for the phrases are: C-7, C-7(b9), F-7, C-7, D-7(b9), G7, and C-6. The key signature remains B-flat major.

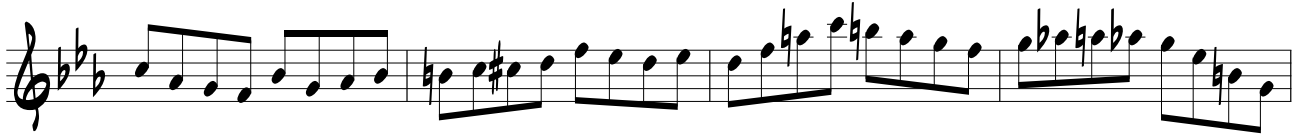
CHORUS 2

The piano accompaniment for Chorus 2 consists of three staves. The top staff features a rhythmic pattern of eighth notes. The middle and bottom staves provide harmonic support with various chords and melodic lines. The key signature is B-flat major.



CHORUS 3





CHORUS 5

